



Residential Access Modification Program (RAMP)

How do the recent changes with
RAMP improve outcomes?

What is RAMP?

The RAMP program is offered by the Government of Alberta to assist Albertans with mobility challenges by providing grants for home modifications that enable them to enter and move within their own living space.

The goal is to improve safety, independence and quality of life by adapting homes, so they are accessible.

Grants are non-repayable (not loans) – aimed at low-income individuals whose living space needs permanent modifications.

Who's Eligible? Applicants meeting mobility, residency, and income requirements:

Residential Access Modification Program (RAMP) Guidelines and Criteria

Be a Canadian citizen or permanent resident who has lived in Alberta for at least 90 continuous days.

Uses a wheelchair on a continual basis or be age 65+ and, at minimum, use a 4-wheel walker on a continual basis.

OR live with a progressive neuro-degenerative disease (examples include multiple sclerosis, muscular dystrophy, ALS, COPD, Parkinson's disease, Alzheimer's disease, spina bifida, spinal cord injuries, non-recovering stroke).

The home being modified must be in Alberta and be your residence – you may be a homeowner, a tenant, or living with family. Sometimes both elderly are with the live-in family.

Indigenous persons living on- or off-reserve are eligible, if other criteria met. Program priority to discharging clients from hospital and palliative care.

Who's Eligible?

In addition to mobility/residency, there are income and property value criteria:

The program is income and person-based: for example, a single adult household must have gross annual income under about \$36,900, a couple with no children under about \$46,500. These thresholds increase with children.

For families with a child who permanently uses a wheelchair, an additional income allowance is added. Sponsored immigration clients require both families' incomes and they are reviewed separately.

Property value caps apply if the home was purchased within the last 24 months in some areas. For example: Calgary ~\$510,000, Edmonton ~\$420,000, rural ~\$276,000.

***exceptions may be made for income within \$1200 of the relevant income threshold**

Family size	Maximum family income	Family size	Maximum family income
Single Adult	\$36,900	Couple, no children	\$46,500
Single Adult, 1 child	\$46,500	Couple, 1 child	\$56,100
Single Adult, 2 children	\$56,100	Couple, 2 children	\$65,700
Single Adult, 3 children	\$65,700	Couple, 3 children	\$75,300
Single Adult, 4 children	\$75,300	Couple, 4 children	\$84,900
Single Adult, 5 children	\$84,900	Couple, 5 children	\$94,500
An additional \$7,131 family income can be added if the family contains a child who permanently uses a wheelchair.			

What modifications are does RAMP fund?

Modifications that enable the applicant to enter and move within their own living space.

What are the challenges getting in and around the home?

They must generally be permanent in nature. Temporary modifications may be possible in certain tenant/ landlord situations. Even Social Housing Units.

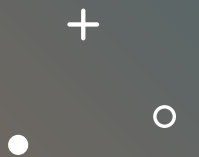
Examples of eligible modifications: ramps, stair lifts, porch lifts, widening doorways/ hallways, bathroom modifications (walk-in showers), handrails, etc.

Use the Barrier Free Design Guidebook as a resource and consider building permits if it's large job or involves structural changes



A Necessary Guidebook

[Accessibility Design Guide 2024](#)





Grants and Limits: Get to the Money!!

Receive up to \$12,000 per person in a benefit year (April 1 to March 31).

The lifetime cap (within a 10-year period) is up to \$24,000 per person.

Application Process & Tips

1

Read RAMP
Guidelines & Criteria

2

Application forms:
- RAMP Application
- Modification
Recommendation
(By OT or PT)
- Applicant checklist
- Quotes, before photos,
income proof, property tax
assessment, etc.

3

Submit package to
RAMP office (mail/email)

Contact: 877-427-5760

4

When approved:

Complete work in
allowed timeframe

Submit invoices/
photos for
reimbursement

5

Tips:

- Obtain two itemized contractor quotes
- Clearly documented mobility challenges
- If renting - landlord's approval (Property Modification Approval form).
- If mods already completed
- then applicant must apply within 90 day (in some cases up to 365 days considered)

What can you get with that?!?!

More

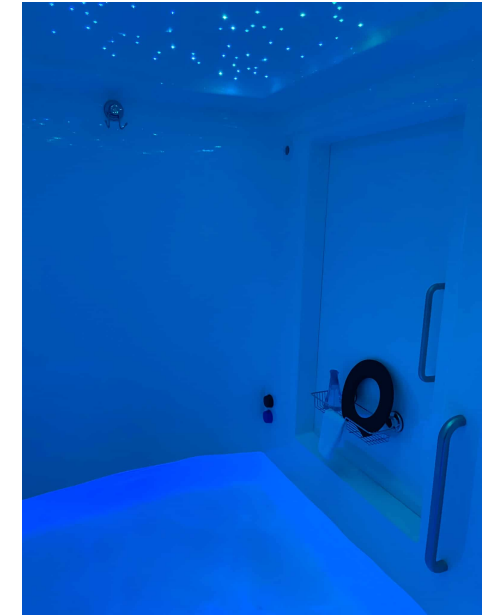
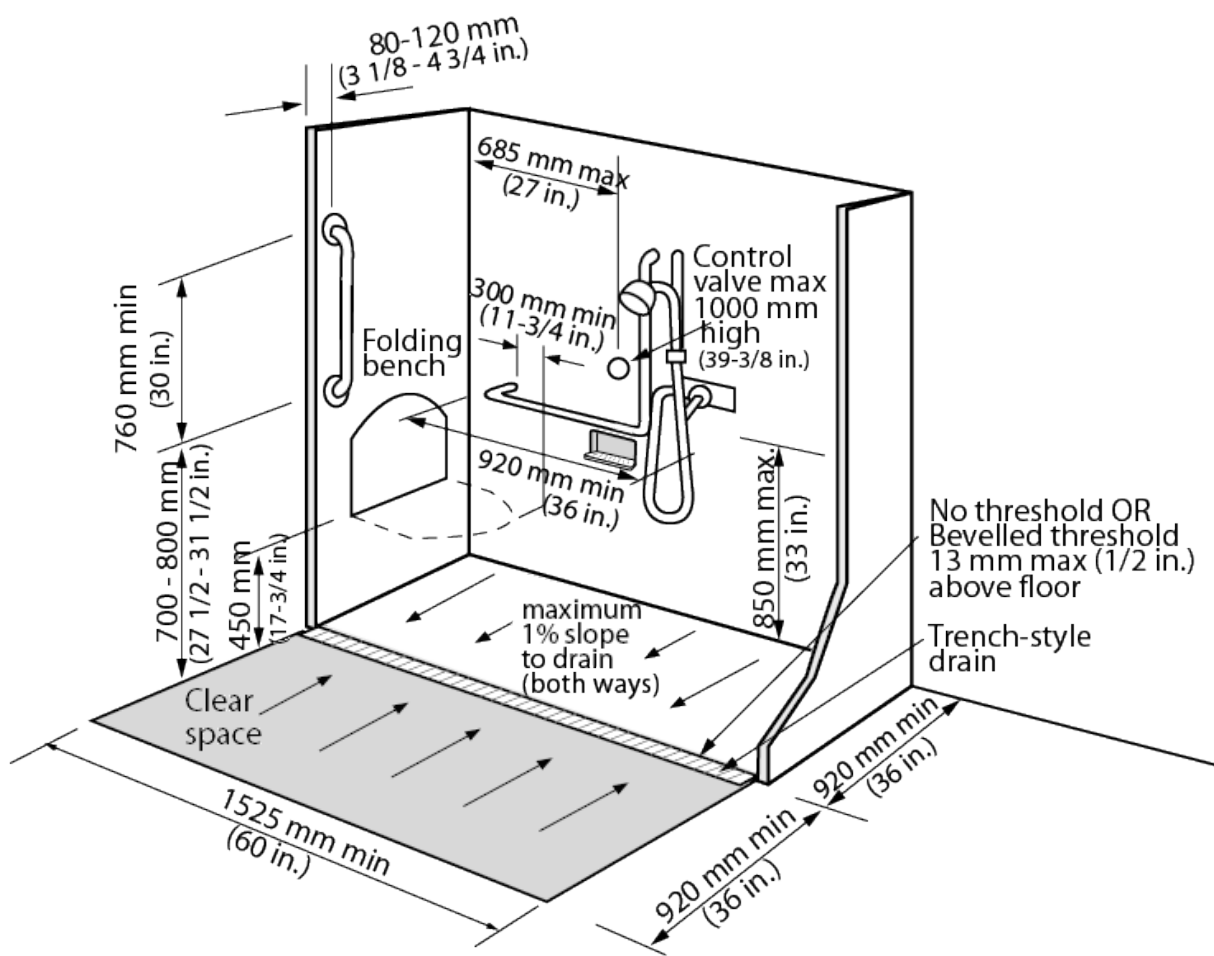
Features and Options

TextStudio



Bathrooms Re-imagined

With the help of Healthcraft Products



Bathrooms Re-imagined





Things to Consider in the Bathroom

- Water-proofing – To what level (Basic, moderate, High-end)
- Space & Design including wall bar location
- Drain Location
- Shower bench or flip down seat or something else or nothing?
- Niches or what type of shelving
- Lighting
- Temperature



Handicare 1100 - Standard Features

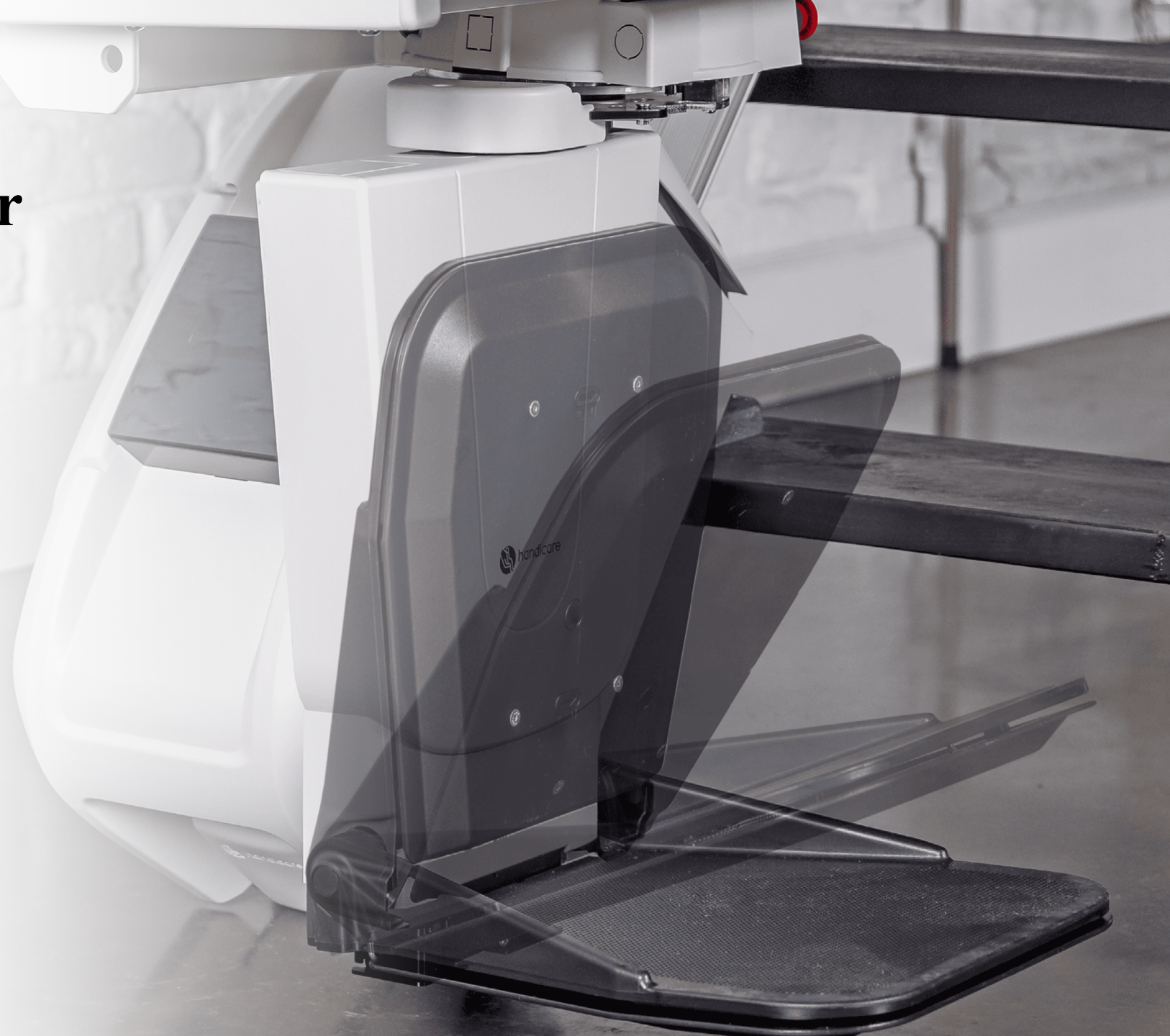


- Charge-anywhere the chair is - The continuous-charge strip means the lift is always charging regardless of where it is parked on the rail.
- Safety features - Seatbelt, obstruction sensors, key switch to prevent unauthorized use.
- Slim - 7" - 12" of staircase used for the rail. Stylish compact design
- Weight capacity: 309lbs (140 kg)
- Highest Quality - Rare servicing and longevity of product

Optional Features - Power Folding Footrest

The footrest can fold and unfold automatically by pressing a button

Ideal for any user that has balance/safety issues or it's challenging/painful to perform that task





Optional Features

- Power Swivel Seat

At the top landing, the seat can automatically swivel to face the landing for easier and safer transfer.

Ideal for clients with challenges to operate the manual handle and/or have a challenging time pivoting the chair manually.

Optional Features - Zero Intrusion Track

The Zero Intrusion feature eliminates the rail overrun, allowing you to install a Handicare 1100 stairlift with no modifications made to your home. Also, the perfect solution for basement stairs and any doors immediately at the top of a staircase.



Optional Features - Slide Track



A Slide Track is slightly shorter than the length of your staircase. As you start to travel up the staircase the track will move with you. The track will reach the top of your stairs before the stairlift, it will then stop whilst your stairlift continues on its journey to the top where you can safely dismount. When you come downstairs the track will travel down with you so you can dismount safely at the bottom.

The Slide Track has safety sensors at both ends; these will stop the track if it encounters an obstacle during use. Your stairlift will continue to move towards the obstacle if desired where, if safe to do so, you can remove the obstruction and continue your journey. Alternatively, the track and stairlift can be moved away from the obstruction....TMI:)



Optional Features Easy Hinge

The Easy Hinge rail allows for the bottom portion of the rail to be lifted, up out of the way, of any doorways or passageways when the stairlift is not in use.

The Easy Hinge has a built-in gas spring, designed to make manual operation as easy as possible.

Flow X

- A premium custom stairlift solution that fits straight, curved, spiral or multi-landing staircases.
- Designed for aesthetics and minimal intrusion: single-rail installation mounted to treads (not the wall) to reduce disruption.
- Manufactured by Access BDD (formerly ThyssenKrupp/Access) with European design & engineering standards.
- Weight capacity: 275 lbs (125 kg).
- Maximum incline handled: up to $\sim 72^\circ$.
- Drive system: rack & pinion motor ~ 350 W, dual 12 V batteries (24 V system) for backup/power-outage capability.
- Minimum staircase width: can install on staircases as narrow as ~ 610 mm (24") thanks to the advanced swivel & levelling technology (ASL).





Flow X – Standard Features

- Automatic swivel & levelling (ASL): the seat rotates during travel and remains level, enabling safe boarding/exiting, especially on narrow or curved stairs.
- Height-adjustable seat & footrest: multiple positions to suit user size/preference.
- Compact folding design: seat, armrests, footrest fold when not in use to keep stair space clear.
- Safety features included: seatbelt, wrap-around armrests, obstruction sensors, emergency lowering, remote call/park controls.
- Aesthetic customization: upholstery and finishes in multiple colours, leather/fabric/vinyl options, rail colour choices.

Flow X - Optional / Upgrade Features

- Automatic folding seat & footrest: raises convenience especially for users with limited mobility – user just pushes button and the system folds/unfolds.
- Call device / connectivity: integrated feature allowing the stairlift to call up to three phone numbers in case of need.
- Rail-end and parking configuration options:
 - Drop-nose (standard) requiring minimal space at bottom step.
 - Short-start/vertical drop-nose for even tighter spaces (100 mm clearance).
 - Horizontal overrun (top or bottom) or parking curve so the unit can be parked away from main stair traffic.
- Upholstery upgrades & colours: leather in various colours, premium fabric selections.
- Armrest styles: straight vs curved, open-access positions to aid transfer.
- Attendant control / key lock for multi-user households or safety for children.





INDOOR/OUTDOOR
VERTICAL PLATFORM LIFT (VPL)

Affordable Access

FLEX LIFT



RESIDENTIAL

RAM – Flex Lift – Vertical Platform Lift

- The RAM Flex Lift (Residential version) is a vertical platform-lift (VPL) designed for residential use — indoors or outdoors — to provide wheelchair/scooter access between levels (up to ~14 ft rise).
- Key suitability: homes with entryways, decks, garages, or small vertical lifts where a traditional elevator might be too large/expensive.
- Lifting capacity: 750 lbs (\approx 340 kg).
- Travel distance capability: up to about 14 ft (\approx 4.3 m) vertical.

Vertical Platform Lift (VPL) Technical / Site- Consideratio n Specs

- Platform size: typical sizes are up to about 42" (W) × 60" (L) for larger configurations.
- Travel speed: ~8 ft per minute.
- Entry/exit options: same-side in/out, straight-through, 90-degree access.
- Ideal for vertical rises up to ~14 ft. Above this you might consider alternate products in the RAM line.
- Installation considerations: may require a tower/column, proper site prep, weather-protection if outdoors.
- **REQUIRES INTERLOCK** for lifts > 28"



Flex Lift - Standard Features

Modular & configurable design: the Flex Lift can be adapted for different entry/exit configurations (straight-through, 90° access, same-side in/out) and platform sizes to accommodate user needs.

Durable, non-slip metal platform with high walls (e.g., 42" walls) for safety, especially in outdoor installations.

Zero-load-start design: the motor reaches full speed before lifting load, improving performance in extreme weather and extending drive-component life. (The most dangerous situation for users – start lifting under load!)

Oversized “Soft Touch” paddle controls — designed for users with limited dexterity.

All-electric drive system (no hydraulic fluid) for quiet, maintenance-friendly operation.


Indoor and outdoor rated: the unit is designed to be installed outside (porch, deck, etc.) in harsh weather conditions.

Flex Lift - Optional Features & Upgrades

- Platform size/custom sizing: While standard platform sizes are available, the Flex Lift supports custom sizing to fit specific site constraints (e.g., larger wheelchairs or scooters).
- Colour & finish customisation: Tower finishes, platform wall colours, handrails, push-button stations can be customised for style or home integration.
- Entry/exit layout options: Choice of same-side inlet/outlet, straight-through, or 90-degree layout depending on the home's architecture and user's mobility.
- Outdoor-ready features: For exterior installation – weather-resistant coatings, open see-through floors (to prevent water accumulation), cold climate operation (even in very low temperatures).
- Safety and control upgrades: Additional gates or landing devices, attendant controls, remote call station, safety pan, etc.
- Coverage for larger rise or multiple stops: While this model covers up to ~14 ft, there may be configurations or alternative models for larger rises. You might present this as “Flex Lift for up to 14 ft; for more height see alternative RAM models.”

QRamp Modular Ramps





QRamp - Key Features

Modular & Customizable

- Configurable layouts (straight, turns, platforms, switchbacks).
- Components can be added, removed, or reconfigured without cutting or welding.
- Ideal for temporary, semi-permanent, or permanent installations.

Easy Installation

- Assembles without power tools or construction expertise.
- Most installs completed in 1–3 hours.
- Adjustable legs for uneven terrain and precise leveling.

Superior Safety

- QGrip™ advanced non-slip decking: high-traction surface that provides grip even when wet or icy.
- Continuous handrails with warm-to-the-touch coating.
- High-visibility edges increase safety in low-light conditions.

Durability & Quality

- Marine-grade aluminum structure designed to resist corrosion.
- UV-stable decking maintains its appearance over time.
- Load capacity typically rated at 850–1,000 lbs depending on configuration.



Wood Ramps

Door Widenings and Automating Access



List of Approved Modifications - RAMP

•Exterior

- Curb Guards
- Exterior Door
- Landing Pads
- Porch Lift with Electrical Connection
- Ramp
- Sidewalk
- Site Prep and clean up
- Stairlift with Electrical Connection
- Survey
- Thresholds
- Walkways

•Interior

- Bathroom Cut-out Inserts
- Bathroom Counter
- Bathroom Enlargement
- Bathroom Fixtures
- Bathlift*
- Bathroom Shelving
- Bathroom Sink

- Ceiling track, Ceiling Lifters, Slings*
- Door and Door Widening
- Door Hinges
- Door Thresholds
- Electrical
- Entrance Hallway Widening
- Floor Covering Changes
- Grab Bars*
- Handrails
- High Rise Toilet
- Landings
- Painting
- Plumbing
- Pocket Door
- Shower Stalls
- Stairlift with Electrical Connection
- Thresholds
- Wall Guards
- Wheel-in Shower
- Wheelchair Accessible Vanity
- *If AADL does not approve